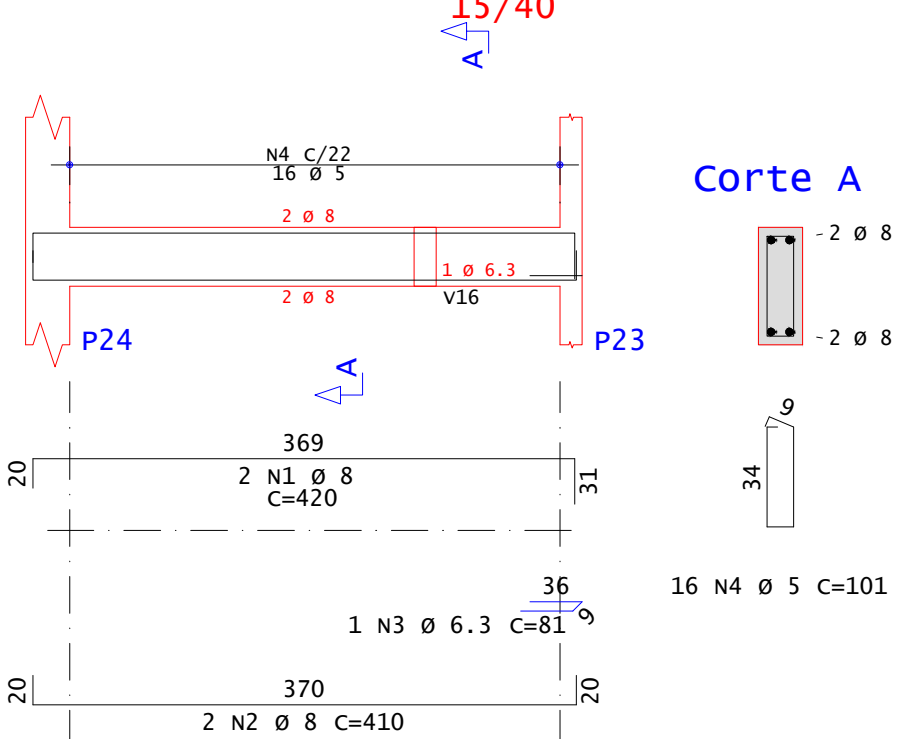
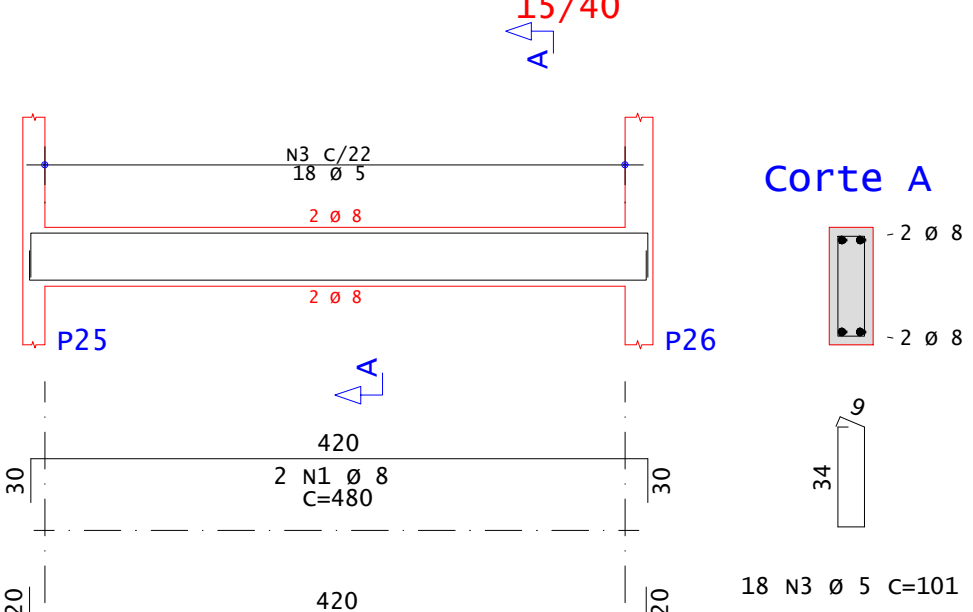


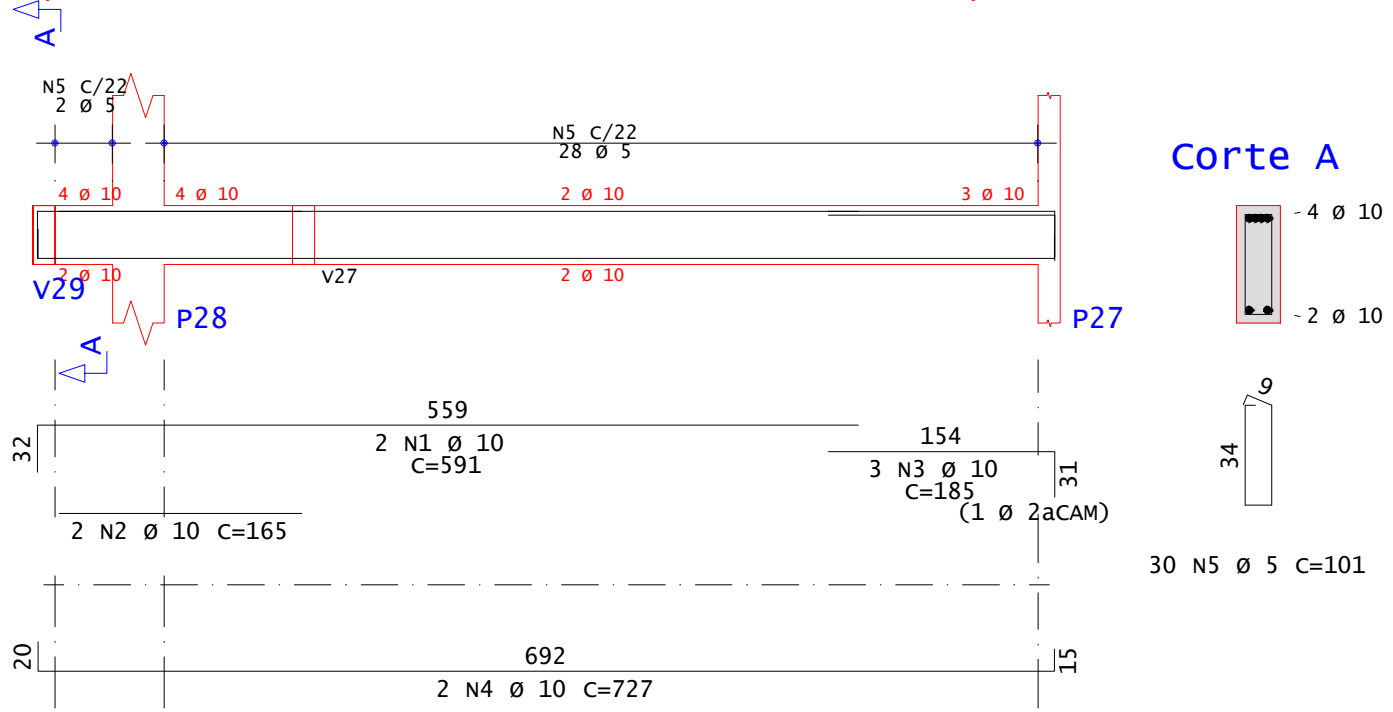
v8



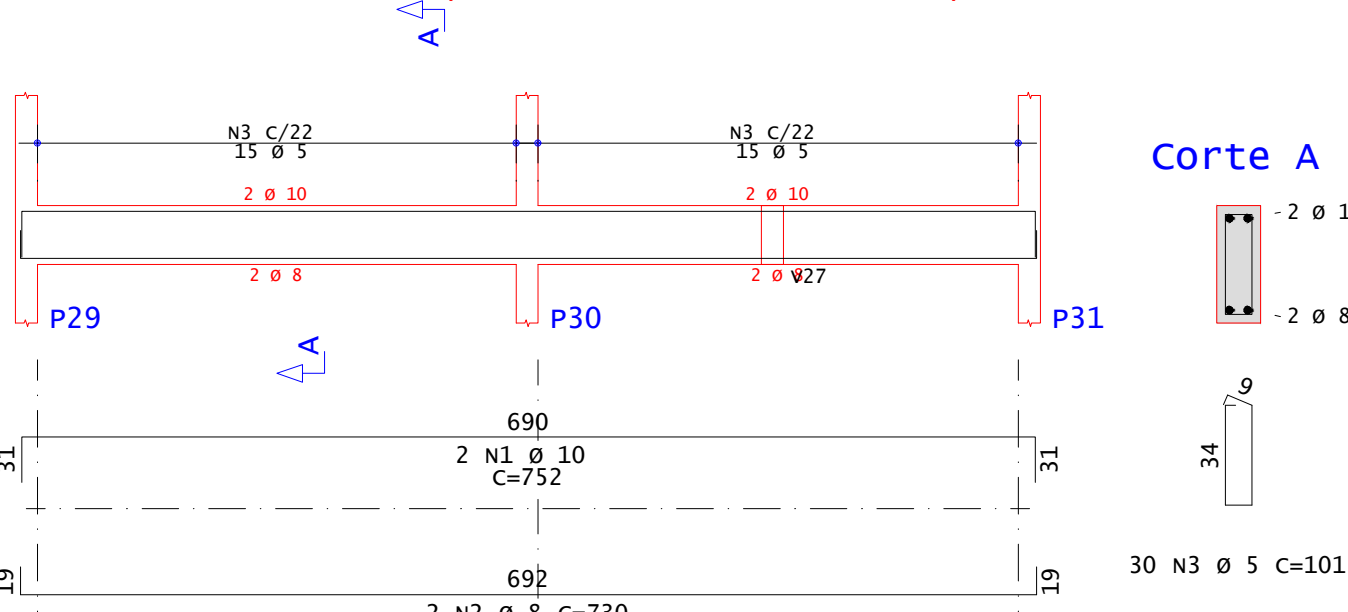
v9



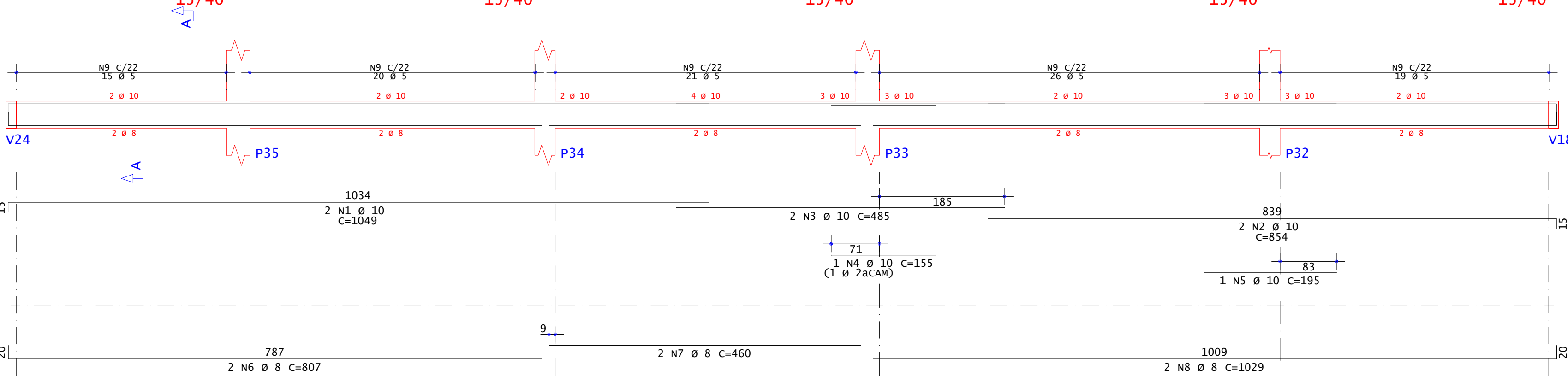
v10



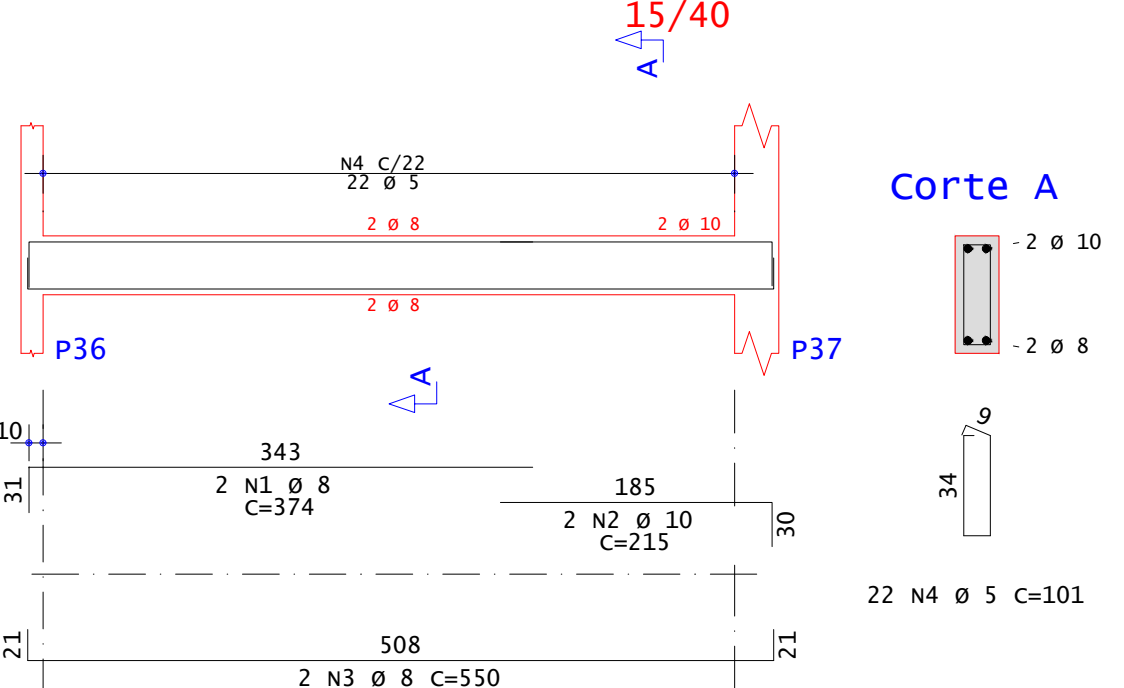
v11



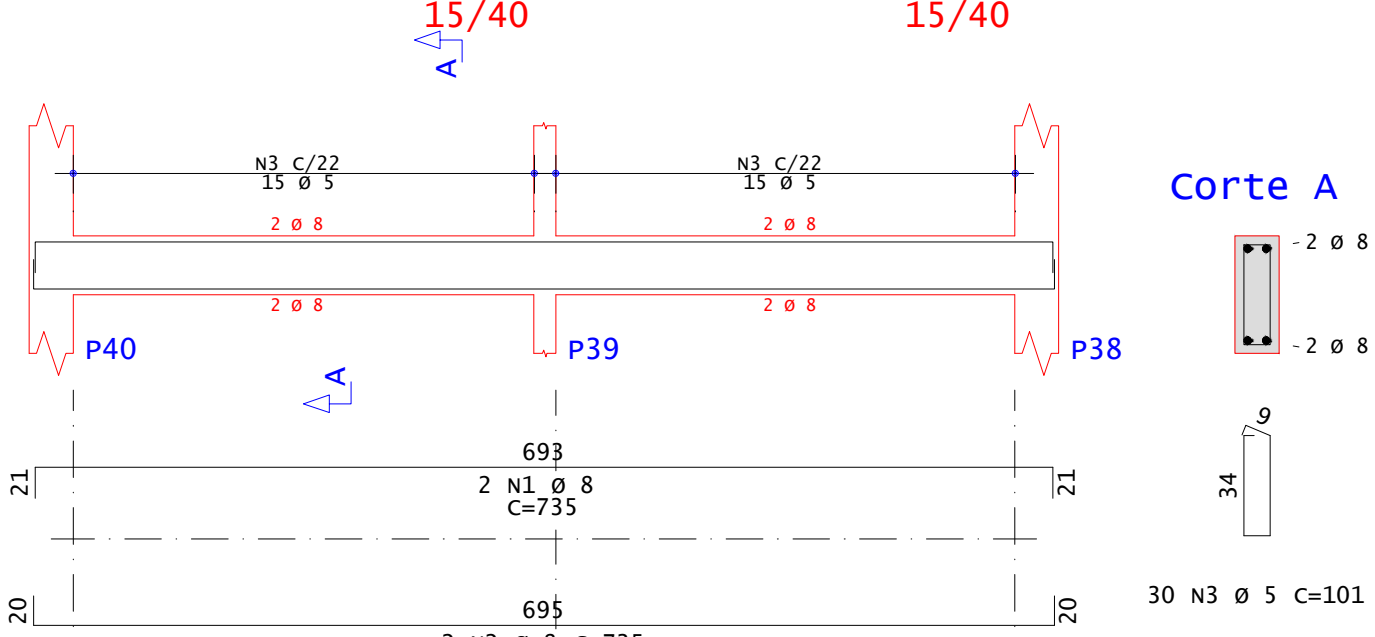
v12



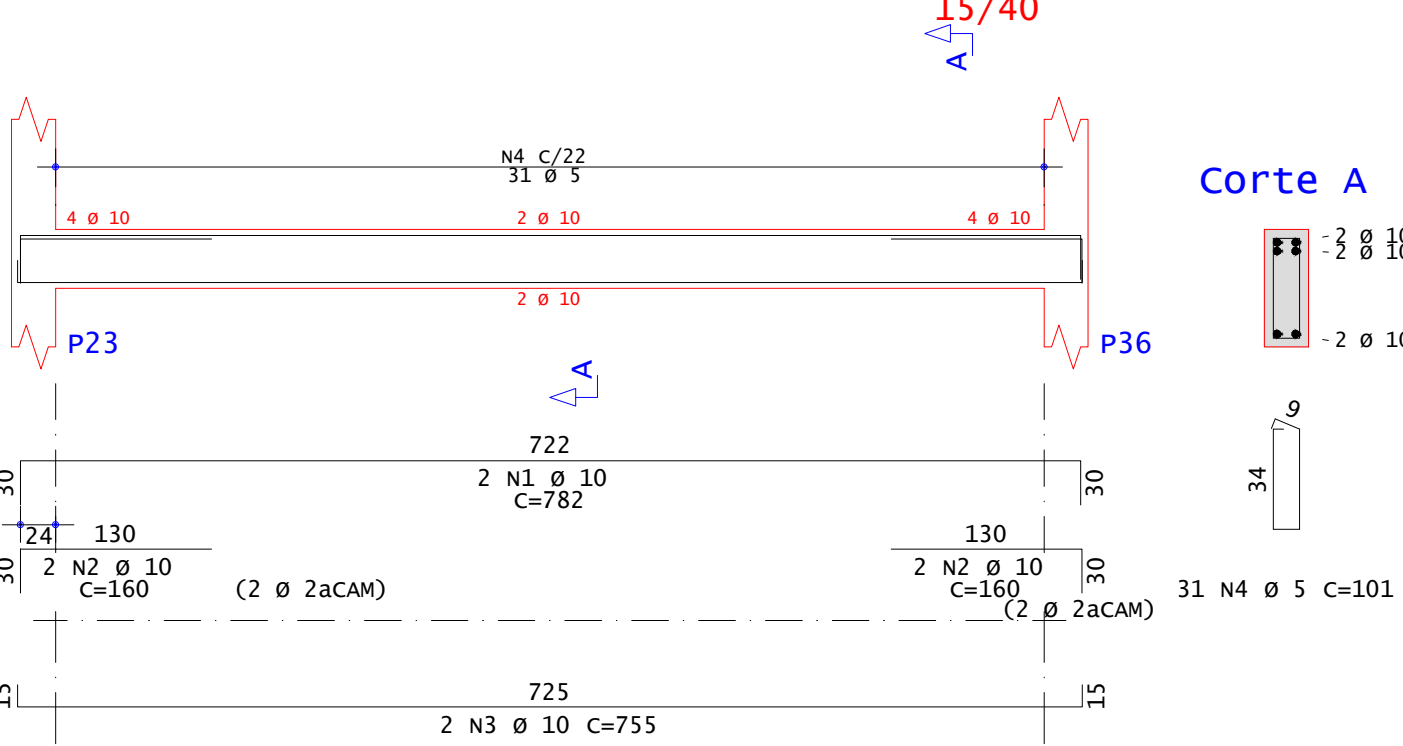
v13



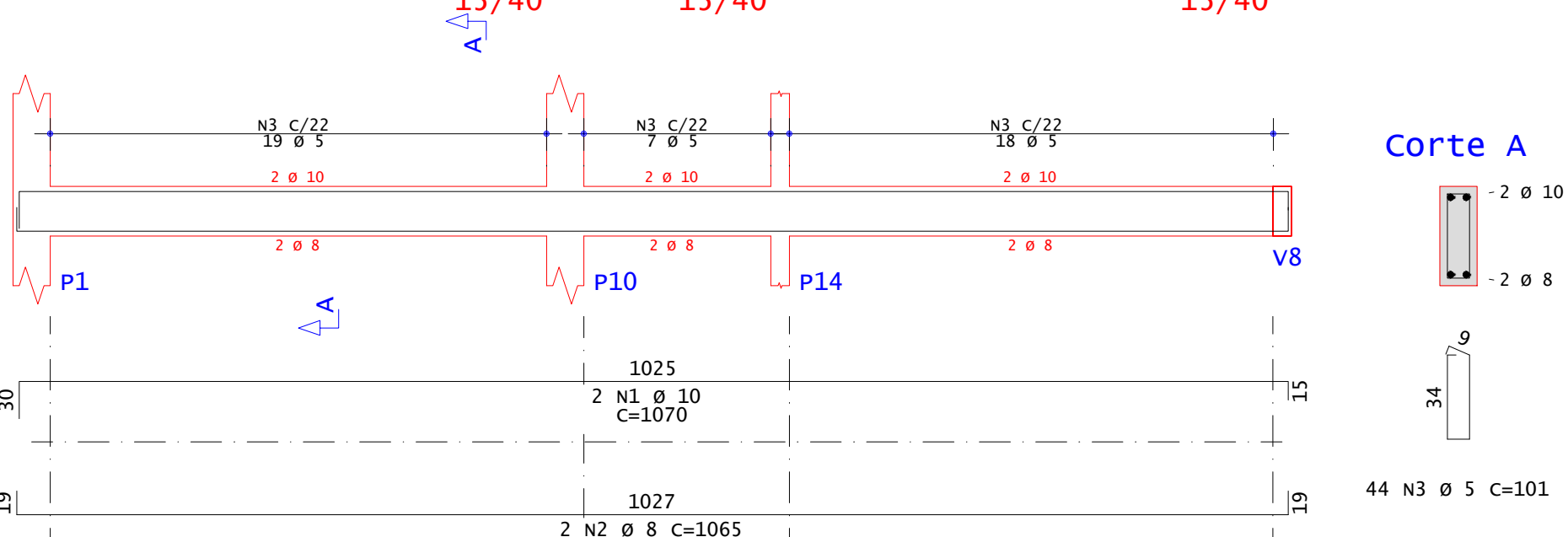
v14



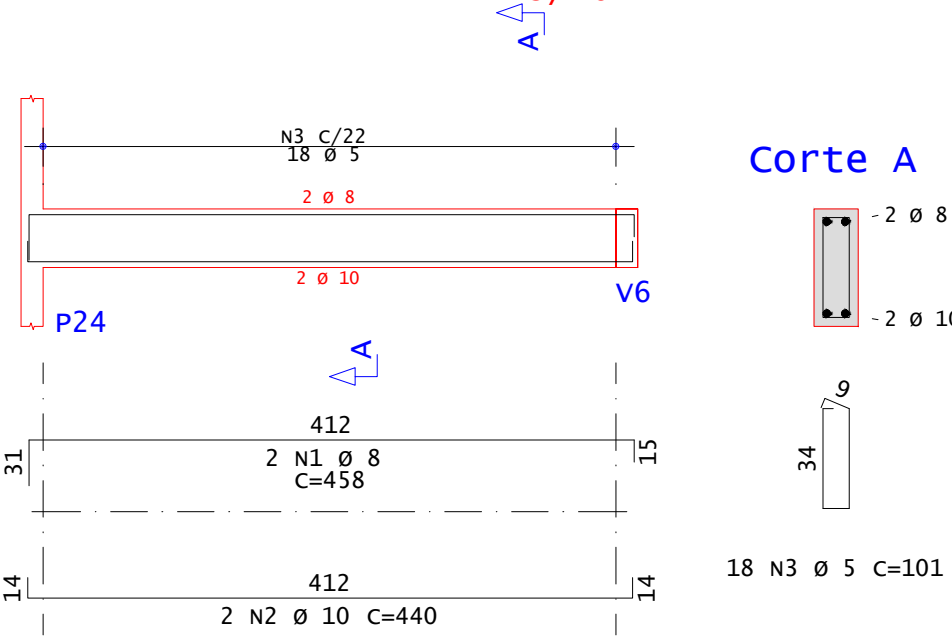
v15



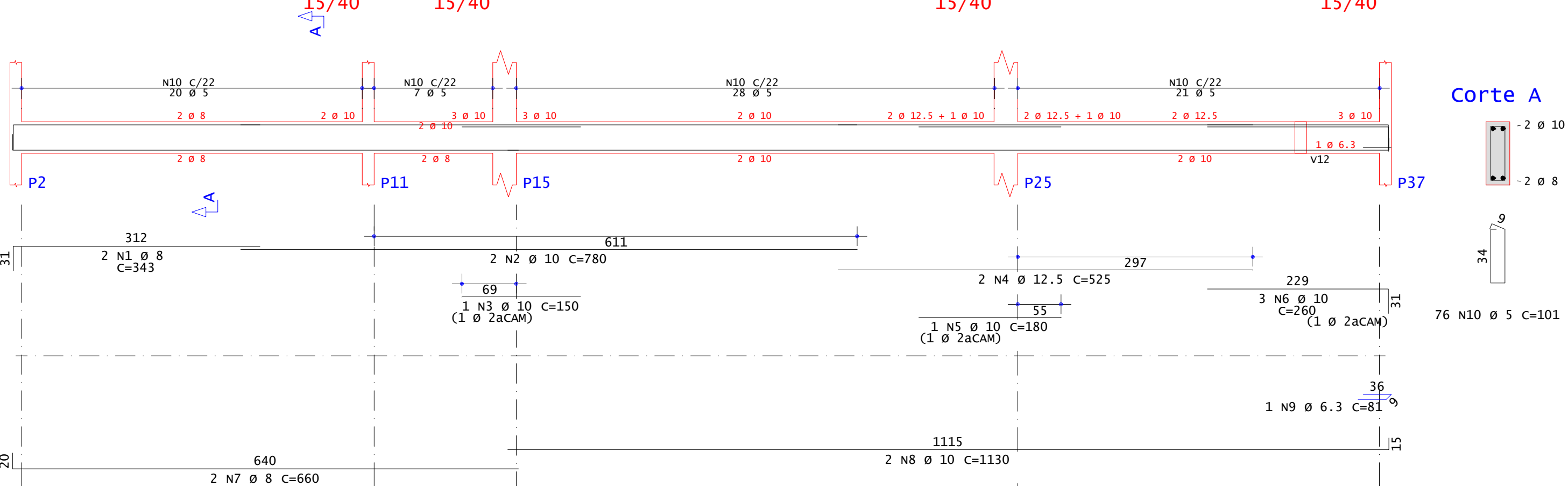
v16



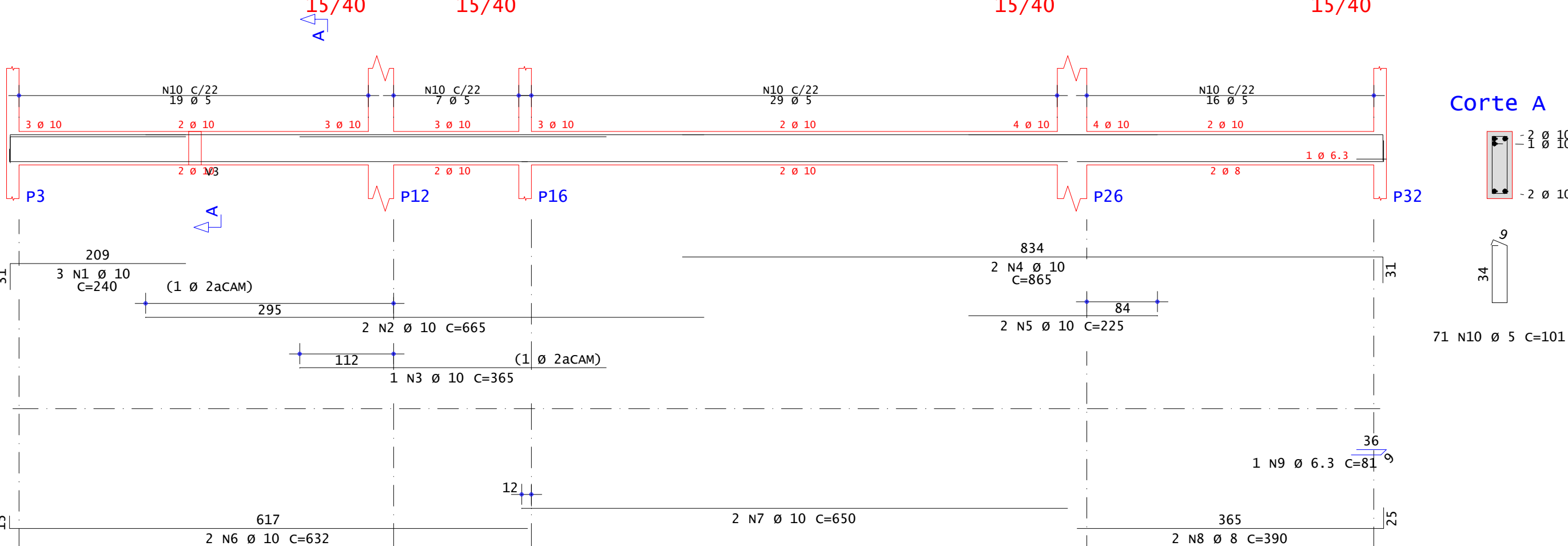
v17



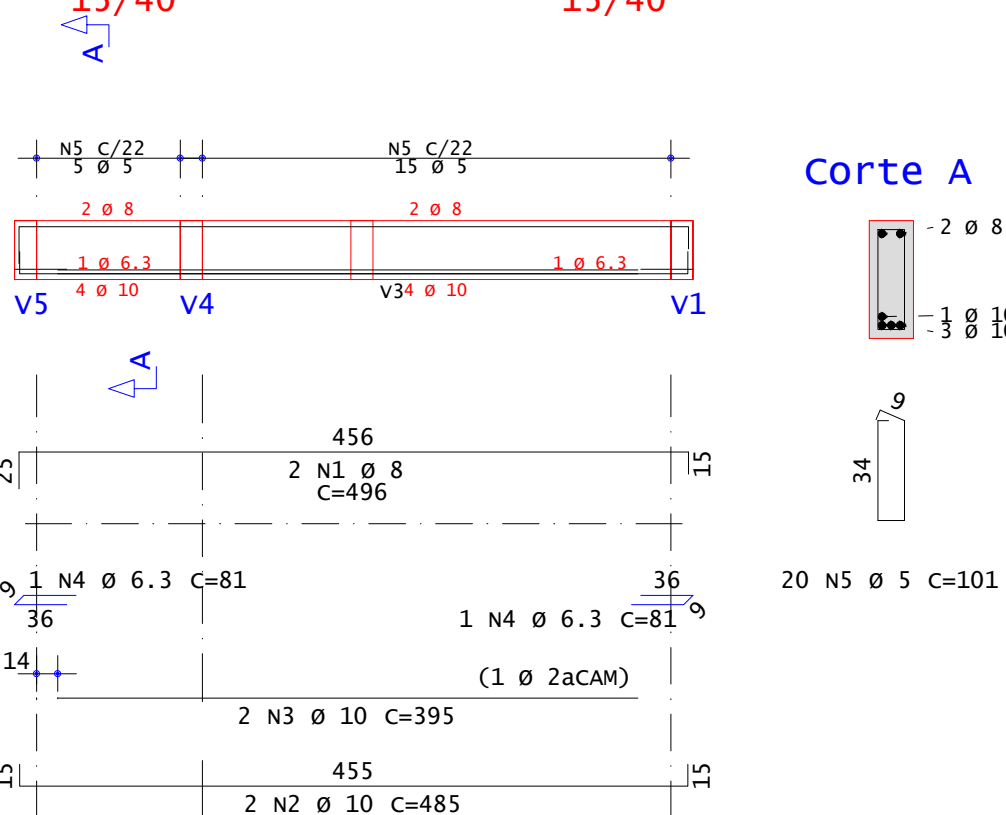
v18



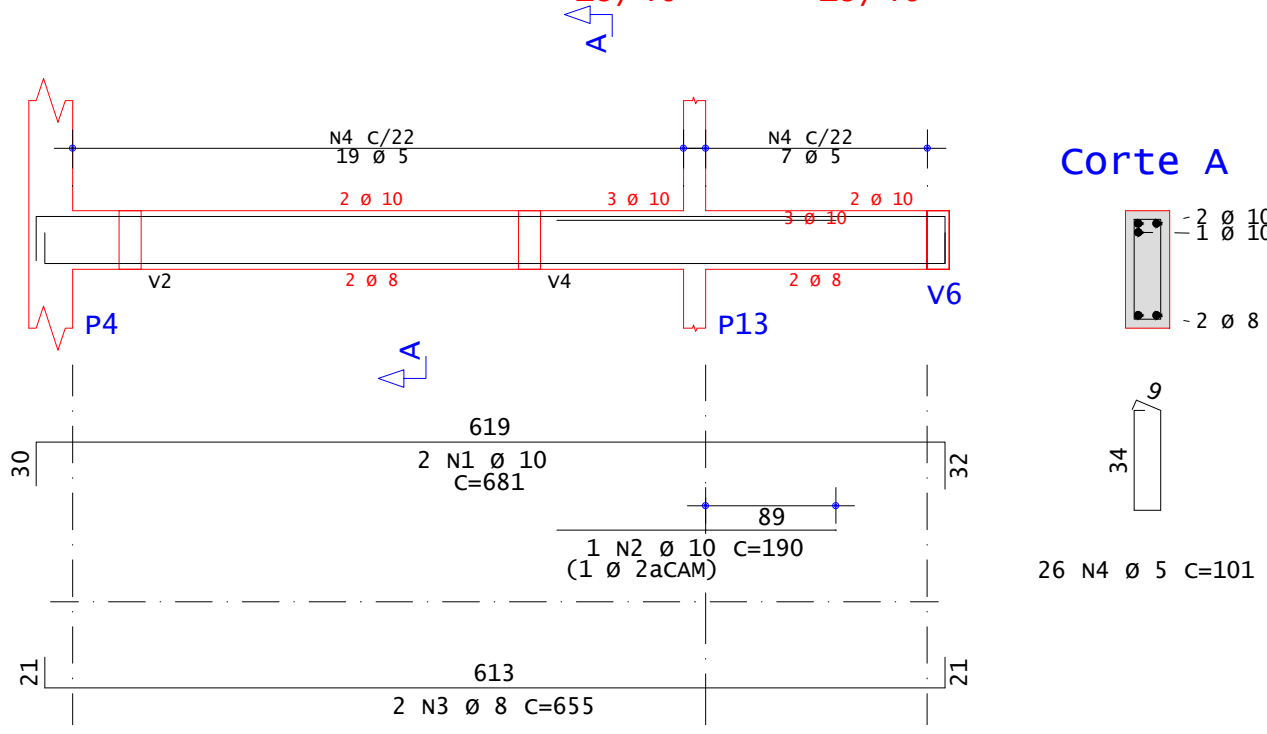
v19



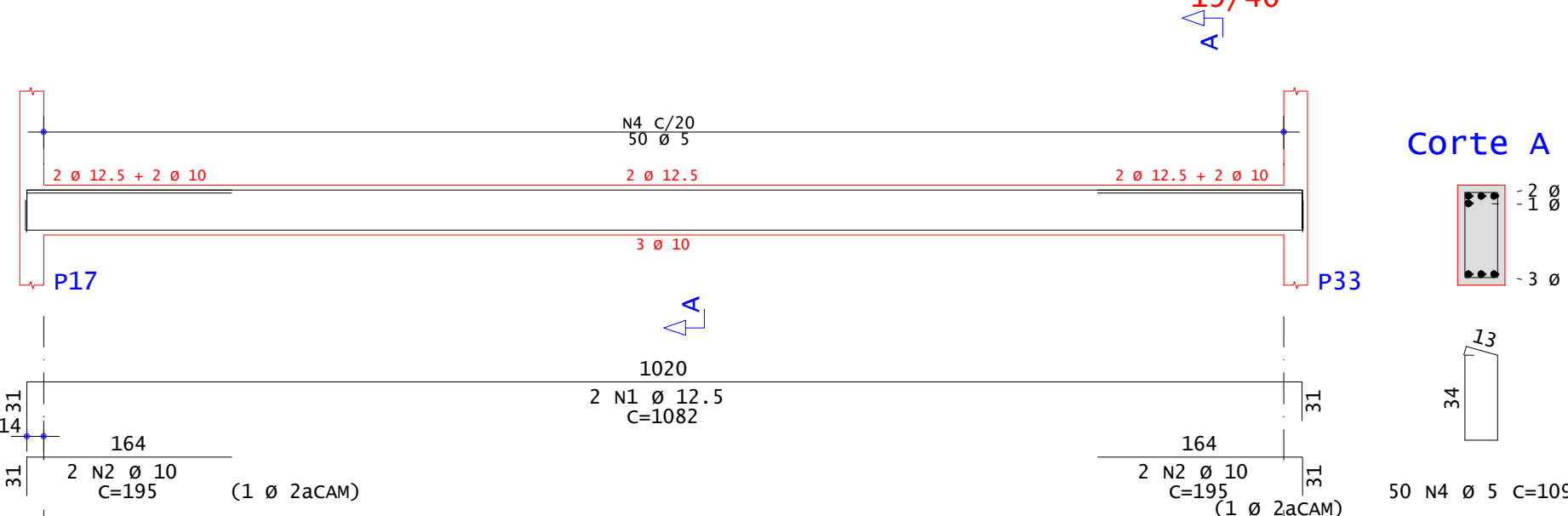
v20



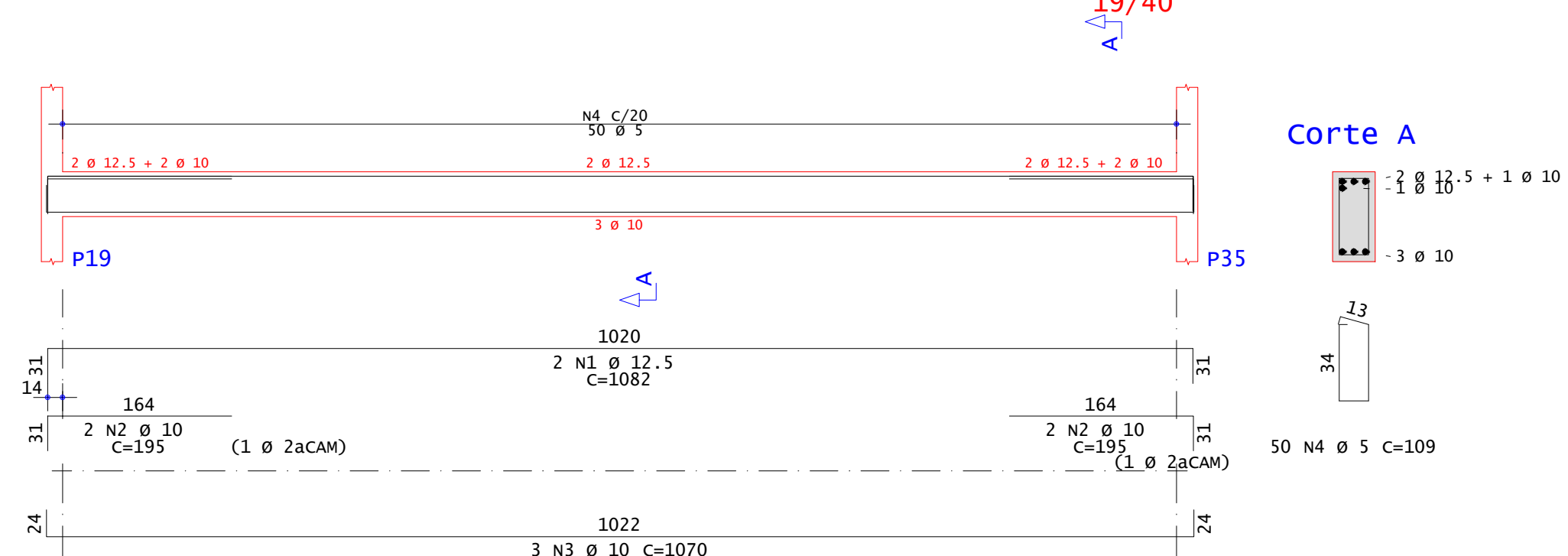
v21



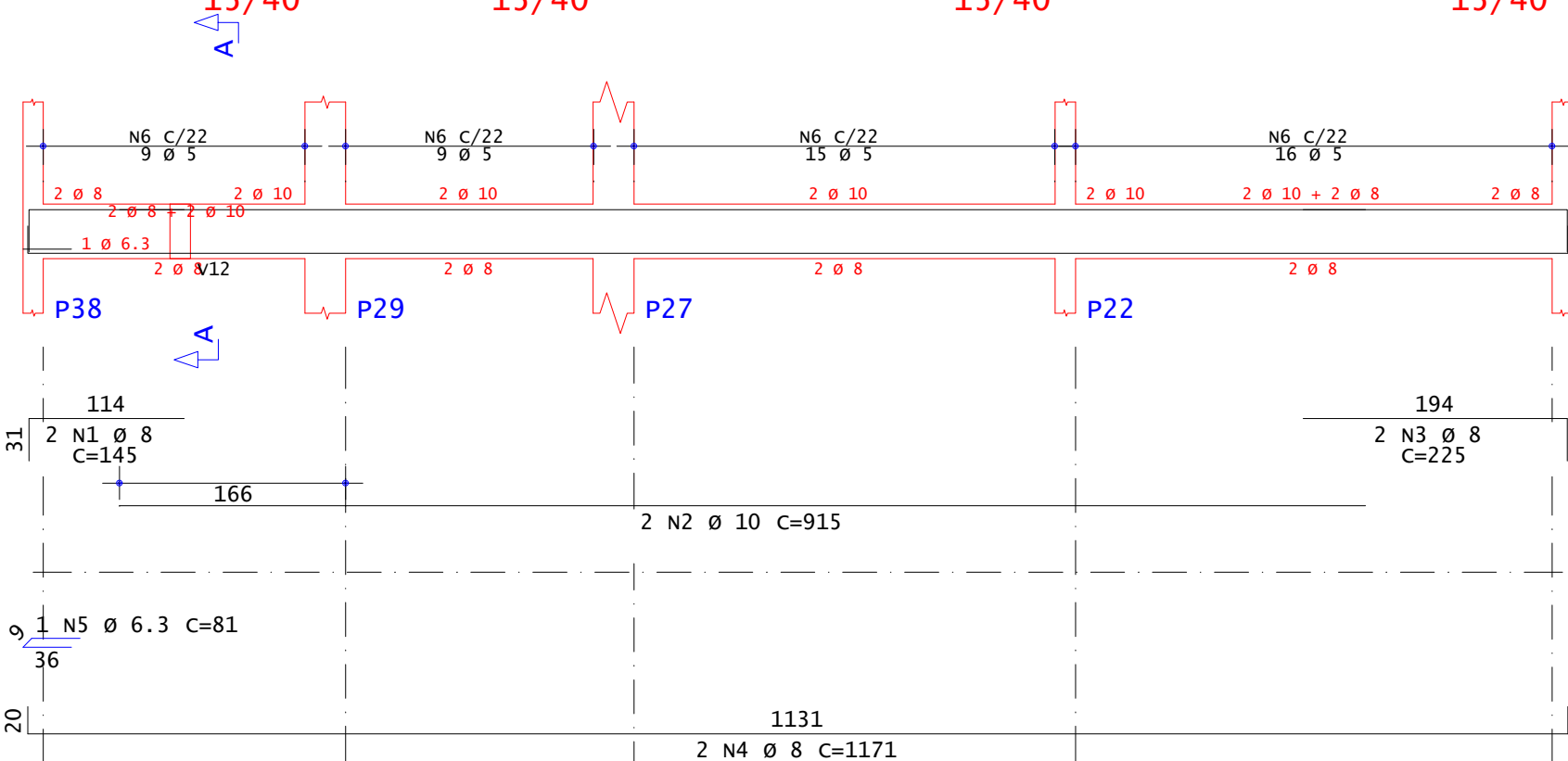
v22



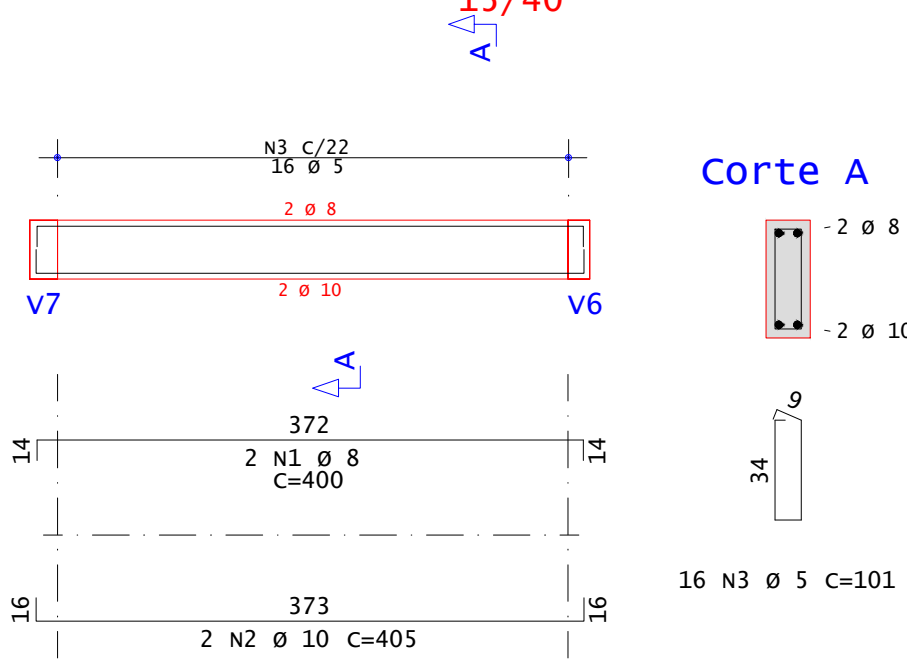
v23



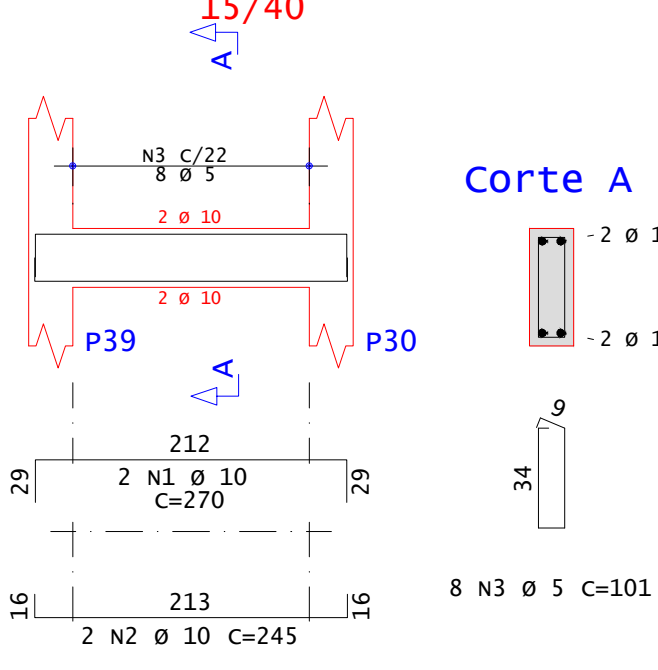
v24



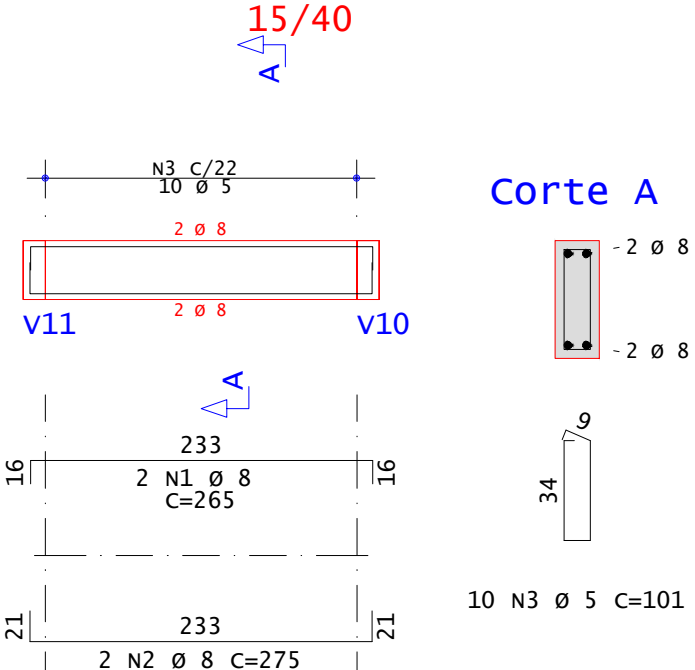
v25



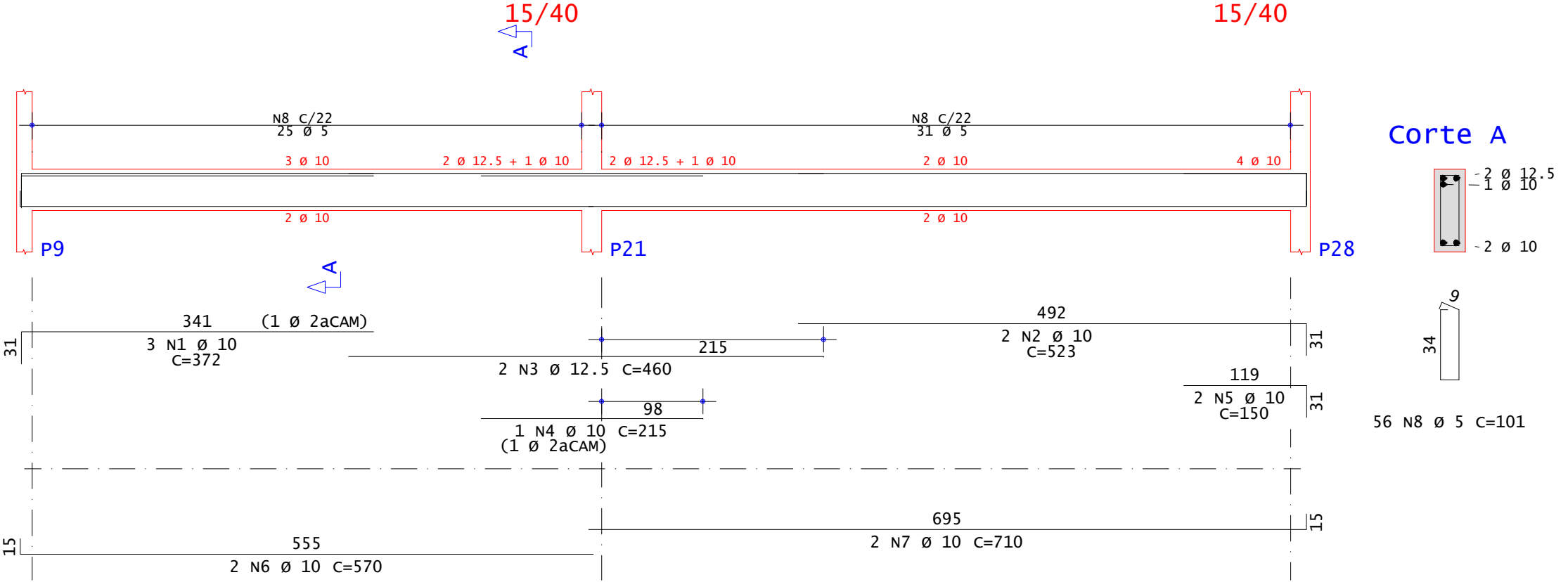
v26



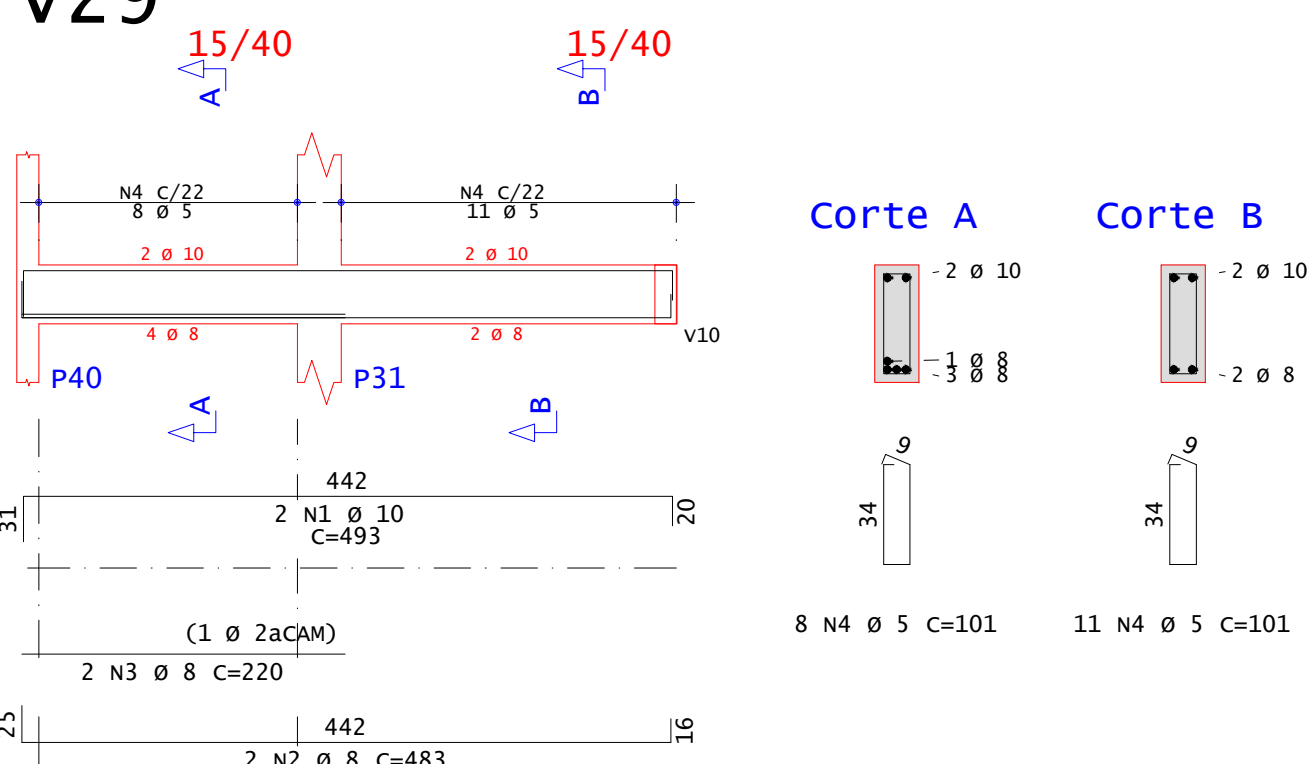
v27



v28

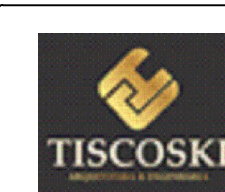


v29



ACO	POS	BIT	QUANT	COMPRIMENTO	UNIT	TOTAL
mm		cm		cm		
V8						
50A	1	8	2	420	840	
50A	2	8	2	410	820	
60A	4	6.3	1	81	81	
60A	5	16	1	101	1616	
V9						
50A	1	8	2	480	960	
50A	2	8	2	460	920	
60A	3	5	18	101	1818	
V10						
50A	1	10	2	591	1182	
50A	2	10	2	485	970	
50A	3	10	3	185	555	
50A	4	10	2	727	1454	
60A	5	5	30	101	3030	
V11						
50A	1	10	2	752	1504	
60A	3	5	30	101	3030	
V12						
50A	1	10	2	1049	2098	
50A	2	10	2	814	1708	
50A	3	10	2	460	920	
50A	4	10	1	155	155	
50A	5	10	1	195	195	
50A	6	8	2	807	1614	
50A	7	8	2	460	920	
50A	8	8	2	1029	2058	
60A	9	5	101	101	10201	
V13						
50A	1	8	2	374	748	
50A	2	10	2	215	430	
50A	3	8	2	530	1100	
60A	4	5	27	101	2722	
V14						
50A	1	8	2	735	1470	
50A	2	8	2	735	1470	
60A	3	5	30	101	3030	
V15						
50A	1	10	2	787	1564	
50A	2	10	2	460	920	
50A	3	10	2	735	1510	
60A	4	5	3	101	3133	
V16						
50A	1	10	2	1070	2140	
50A	2	8	2	1065	2130	
60A	3	5	44	101	4444	
V17						
50A	1	8	2	438	876	
50A	2	10	2	440	880	
60A	3	5	18	101	1818	
V18						
50A	1	8	2	343	686	
50A	2	10	2	780	1560	
50A	3	10	1	150	150	
50A	4	12.5	2	525	1050	
50A	5	10	2	180	360	
50A	6	10	3	260	780	
50A	7	8	2	660	1320	
50A	8	10	2	1130	2260	
50A	9	6.3	1	81	81	
60A	10	5	76	101	7676	
V19						
50A	1	10	3	240	720	
50A	2	10	2	665	1330	
50A	3	10	1	365	365	
50A	4	10	2	865	1730	
50A	5	10	2	225	450	
50A	6	10	2	612	1264	
50A	7	8	2	650	1300	
50A	8	8	2	390	780	
50A	9	6.3	1	81	81	
60A	10	5	71	101	7171	
V20						
50A	1	8	2	496	992	
50A	2	10	2	485	970	
50A	3	10	2	395	790	
50A	4	6.3	1	81	162	
60A	5	5	20	101	2020	
V21						
50A	1	10	2	481	962	
50A	2	10	1	190	190	
50A	3	10	4	195	780	
60A	4	5	26	101	2626	
V22						
50A	1	12.5	2	1082	2164	
50A	2	10	4	195	780	
50A	3	10	3	1070	3210	
60A	4	5	50	109	5450	
V23						
50A	1	12.5	2	1082	2164	
50A	2	10	3	1070	3210	
50A	3	10	3	1070	3210	
60A	4	5	50	109	5450	
V24						
50A	1	8	2	145	290	
50A	2	10	2	915	1830	
50A	3	8	2	225	450	
50A	4	8	2	1171	2342	
50A	5	6.3	1	81	81	
60A	6	5	49	101	4949	
V25						
50A	1	8	2	400	800	
50A	2	10	2	405	810	
60A	3	5	16	101	1616	
V26						
50A	1	10	2	270	540	
50A	2	10	2	245	490	
60A	3	5	8	101	808	
V27						
50A	1	8	2	265	530	
50A	2	8	2	275	550	
60A	3	5	10	101	1010	
V28						
50A	1	10	3	372	1116	
50A	2	10	2	523	1046	
50A	3	12.5	1	460	920	
50A	4	10	1	215	215	
50A	5	10	2	150	300	
50A	6	10	2	570	1140	
50A	7	10	2	710	1420	
60A	8	5	56	101	5656	
V29						
50A	1	10	2	493	986	
50A	2	8	2	483	966	
50A	3	8	2	220	440	
60A	4	5	19	101	1919	

RESUMO DE AÇO			
ACO	BIT	COMPR	PESO
mm		m	kgf
60A	8	807	124
50A	6.3	8	114
50A	10	506	312
50A	12.5	63	63
Peso Total		60A =	124 kgf
Peso Total		50A =	488 kgf



TISCOSKI
ARQUITETURA E ENGENHARIA

PROJETO ESTRUTURAL

CÂMARA MUNICIPAL DE MORRO DA FUMACA
RUA EMILIO FRASSON, 130, BARRIO MONTE
VERDE, MORRO DA FUMACA/SC

CONTEUDO
-FRANCHA PAU TERREO
-DETALHAMENTO VIGAS BALDRAME

PROPRIETARIO:
MUNICIPIO DE MORRO DA FUMACA
CNPJ: 83.000.323/0001-02

FRANCHA:
05/15

RESPONSÁVEL TÉCNICO:
HJ ARQUITETURA E ENGENHARIA LTDA
CREA-SC 187117-2
JULIANA TISCOSKI - CREA-SC 123317-7

ESCALA INDICADA
DESENHO AMANDA
ÁREA TOTAL 554,55m²
DATA AGOSTO/2025